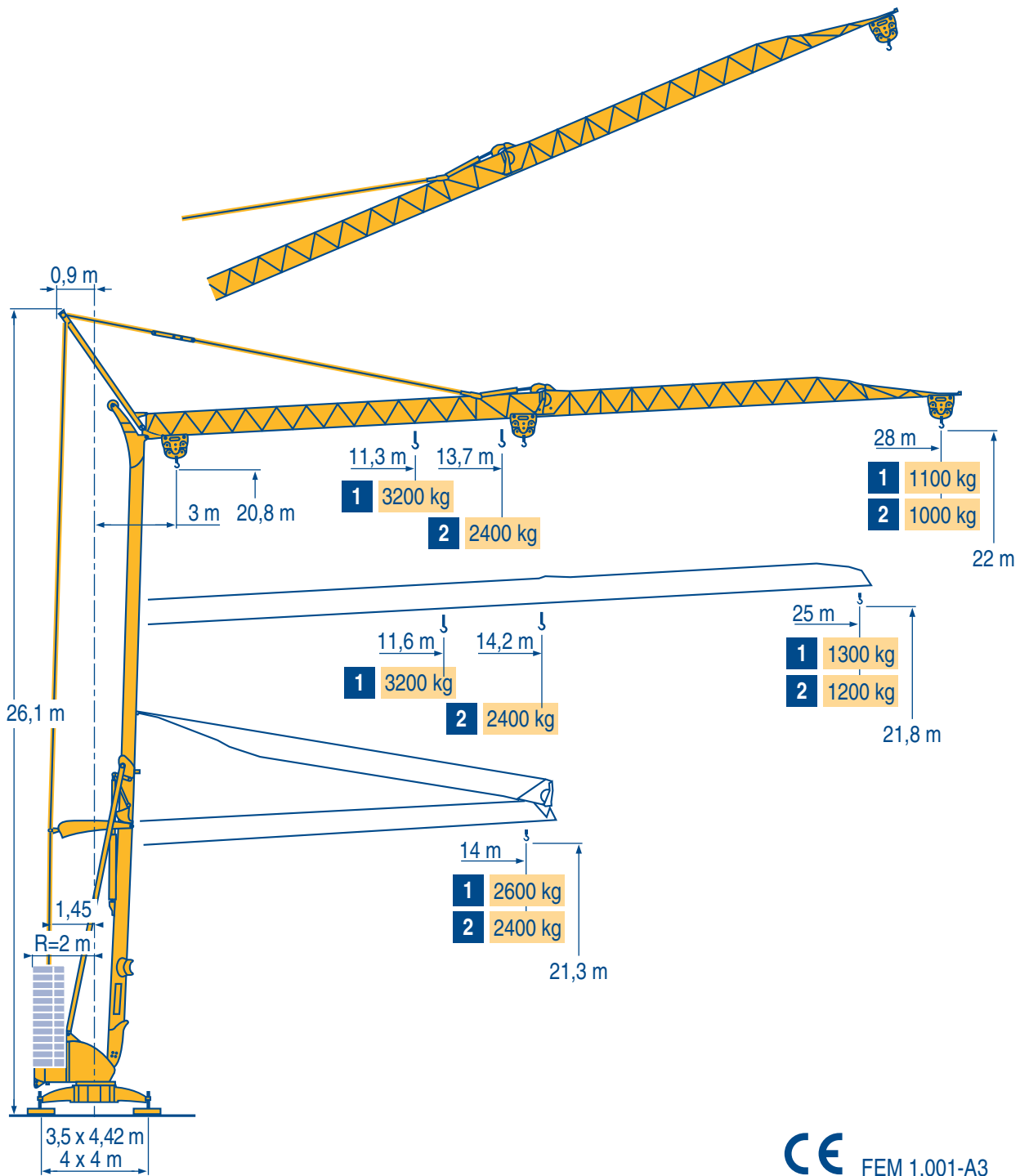


Igo 28 A



- Igo HD
Igo M
Igo HDM
- HDT
- GTMR
- CITY CRANE
- TOPKIT MD
MAXI MD
- MAXI TOPKIT
- Topless MDT
- MR

CE FEM 1.001-A3



LWR 1

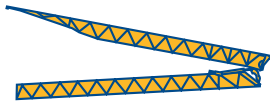
Courbes de charges
Lastkurven



Load diagrams
Curvas de cargas



Curve di carico
Curva de cargas



1 3200 kg

28 m	3	▶	11,9	12	13	14	m	11,3	12	13	14	15	16	17	18	19	20	20,6	21	22	23	24	25	26	27	28	m	
▲	▲	▲	▲	▲	▲	▲	▲	▲	▲	▲	▲	▲	▲	▲	▲	▲	▲	▲	▲	▲	▲	▲	▲	▲	▲	▲	▲	kg

25 m	3	▶	11,9	12	13	14	m	11,6	12	13	14	15	16	17	18	19	20	21	22	23	24	25	m					
▲	▲	▲	▲	▲	▲	▲	▲	▲	▲	▲	▲	▲	▲	▲	▲	▲	▲	▲	▲	▲	▲	▲	▲	kg				

2 2400 kg

28 m	3	▶	14	m	13,7	14	15	16	17	18	19	20	21	22	23	24	25	26	27	28	m							
▲	▲	▲	▲	▲	▲	▲	▲	▲	▲	▲	▲	▲	▲	▲	▲	▲	▲	▲	▲	▲	▲	kg						

25 m	3	▶	14	m	14,2	15	16	17	18	19	20	21	22	23	24	25	m											
▲	▲	▲	▲	▲	▲	▲	▲	▲	▲	▲	▲	▲	▲	▲	▲	▲	kg											

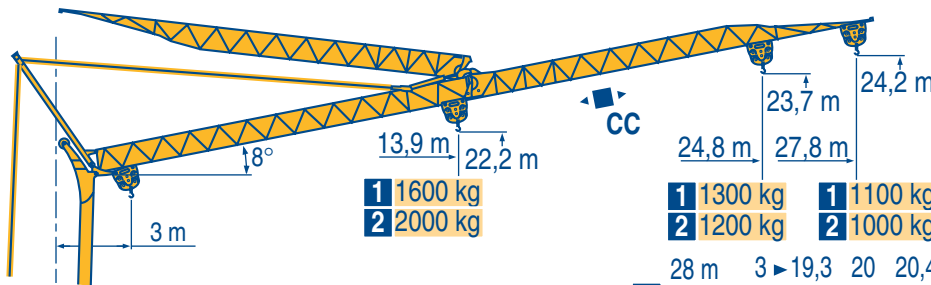
Flèche relevée
Ausleger in Steilstellung



Luffing jib
Flecha izada



Braccio impennato
Lança inclinada



1 1600 kg
2 2000 kg

1 1300 kg
2 1200 kg

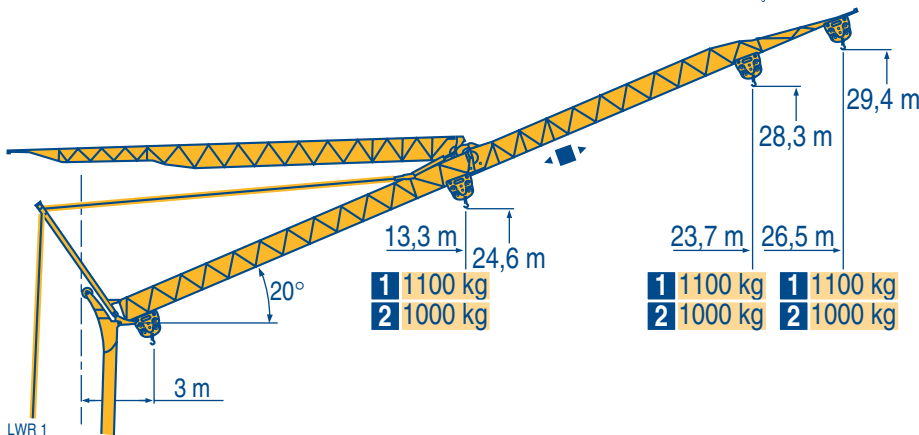
1 1100 kg
2 1000 kg

28 m	3	▶	19,3	20	20,4	21	22	23	24	25	26	27	27,8	m
▲	▲	▲	▲	▲	▲	▲	▲	▲	▲	▲	▲	▲	▲	kg

25 m	3	▶	19,8	20	20,9	21	22	23	24	24,8	m
▲	▲	▲	▲	▲	▲	▲	▲	▲	▲	▲	kg

28 m	3	▶	15,8	17	19	21	22	23	24	25	26	27	27,8	m
▲	▲	▲	▲	▲	▲	▲	▲	▲	▲	▲	▲	▲	▲	kg

25 m	3	▶	16,3	17	19	21	22	23	24	24,8	m
▲	▲	▲	▲	▲	▲	▲	▲	▲	▲	▲	kg



1 1100 kg
2 1000 kg

1 1100 kg
2 1000 kg

28 m	3	▶	26,5	m
▲	▲	▲	▲	kg

25 m	3	▶	23,7	m
▲	▲	▲	▲	kg

28 m	3	▶	26,5	m
▲	▲	▲	▲	kg

25 m	3	▶	23,7	m
▲	▲	▲	▲	kg

	Chariot distributeur	F	Verfahrbare laufkatze	D	Traversing trolley	GB	Carro distribuidor	E	Carrellino distributore	I	Carro distribuidor	P
	Chariot distributeur et courbes de charges		Verfahrbare laufkatze und lastkurven		Traversing trolley and load diagrams		Carro distribuidor y curvas de cargas		Carrellino distributore e curve di carico		Carro distribuidor e curva de cargas	

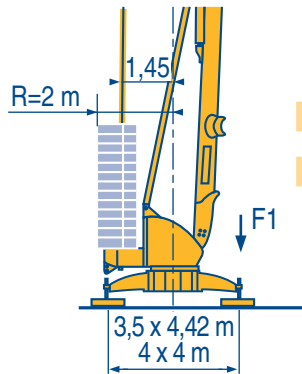
Réactions
Eckdrücke



Reactions
Reacciones



Reazioni
Reações



F1 ● 16,9 t ■ 16,5 t

9,66 t

LWR 1

●	Réactions en service	F	Reaktionskräfte in Betrieb	D	Reactions in service	GB	Reacciones en servicio	E	Reazioni in servizio	I	Reacções em serviço	P
■	Réactions hors service		Reaktionskräfte außer Betrieb		Reactions out of service		Reacciones fuera de servicio		Reazioni fuori servizio		Reacções fora de serviço	
👤	A vide sans lest (ni train de transport) avec flèche et hauteur maximum		Ohne Last, Ballast (und Transportachse), mit Maximalausleger und Maximalhöhe.		Without load, ballast (or transport axes), with maximum jib and maximum height.		Sin carga, sin lastre, (ni tren de transporte), flecha y altura máxima.		A vuoto, senza zavorra (ne assali di trasporto) con braccio massimo e altezza massima.		Sem carga (nem trem de transporte)-sem lastro com lança e altura máximas.	

Mécanismes
Antriebe



Mechanisms
Mecanismos

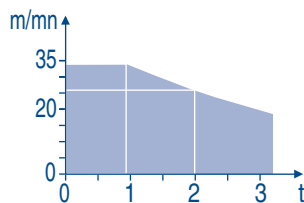


Meccanismi
Mecanismos

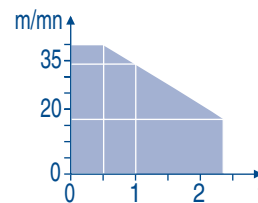


												ch - PS hp	kW	
▲ ● ▼	15 LVF 10 Optima	m/min	3,6	18	37	49	66						15	11
		kg	1600	1600	1600	1100	500							
		m/min	3,6	18	37	54	66	1,8	9	19	27	33		
		kg	1600	1600	1600	1000	500	3200	3200	3200	2000	1000		
◀■▶	3 DVF5	m/min	19 - 41										3	2,2
▲ ● ▼	10 LVF 12 Optima	m/min	2	10	17	34	40						10	7,5
		kg	2400	2400	2400	1000	500							
		m/min	15 - 38 (0 → 1000 kg)					15 - 30 (1000 → 2400 kg)						
◀■▶	2 DVF5	m/min	15 - 38 (0 → 1000 kg) 15 - 30 (1000 → 2400 kg)										2	1,5
🌀	RVF2-30	tr/min U/min rpm	0 → 0,8										2	1,5
CEI 38		IEC 38	kVA											
400 V (+6% -10%) 50 Hz			15 LVF 10 : 20 kVA 10 LVF 12 : 14 kVA				2000/14							

15 LVF 10
Optima



10 LVF 12
Optima



LWR 1

▲ ● ▼	Levage	F	Heben	D	Hoisting	GB	Elevación	E	Sollevamento	I	Elevação	P
◀■▶	Distribution		Katzfahren		Trolleying		Distribución		Distribuzione		Distribuição	
🌀	Orientation		Schwenken		Slewing		Orientación		Rotazione		Rotação	
👤	Conforme aux directives CEE sur le niveau acoustique		Gemäss EWG-Richtlinien für den Schall-Leistungspegel		In compliance with the EEC Instructions on noise level		Conforme con las directivas CEE sobre el nivel acustico		Conforme alle direttive CEE sul livello acustico		Conforme as directivas CEE sobre o nível acústico	

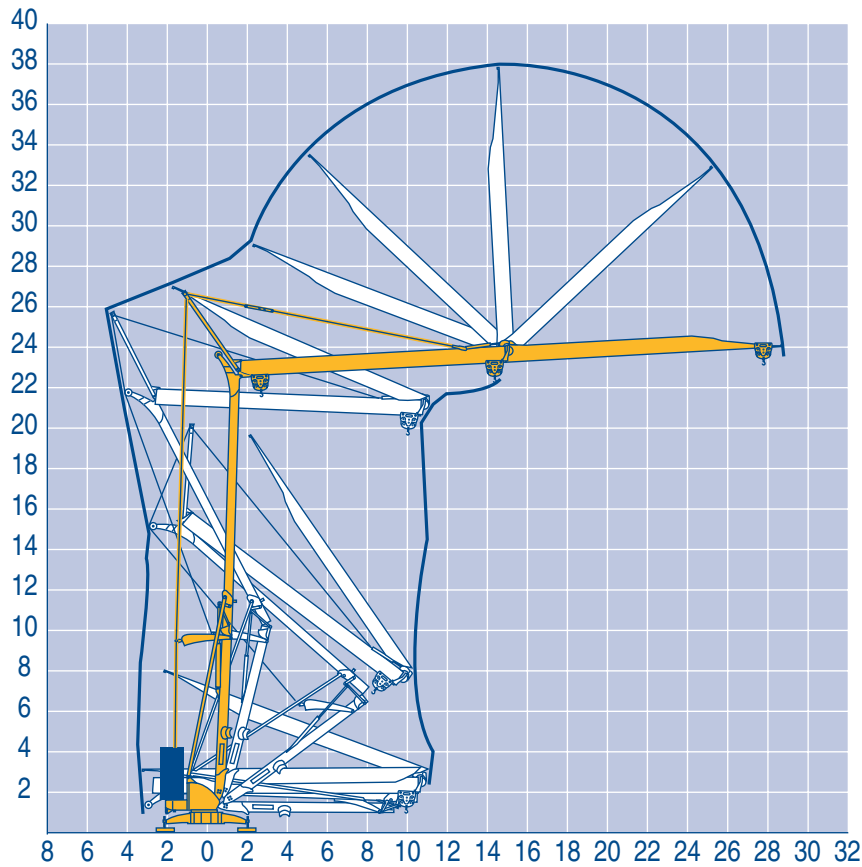
Montage
Montage



Erection
Montaje



Montaggio
Montagem



LWR 1

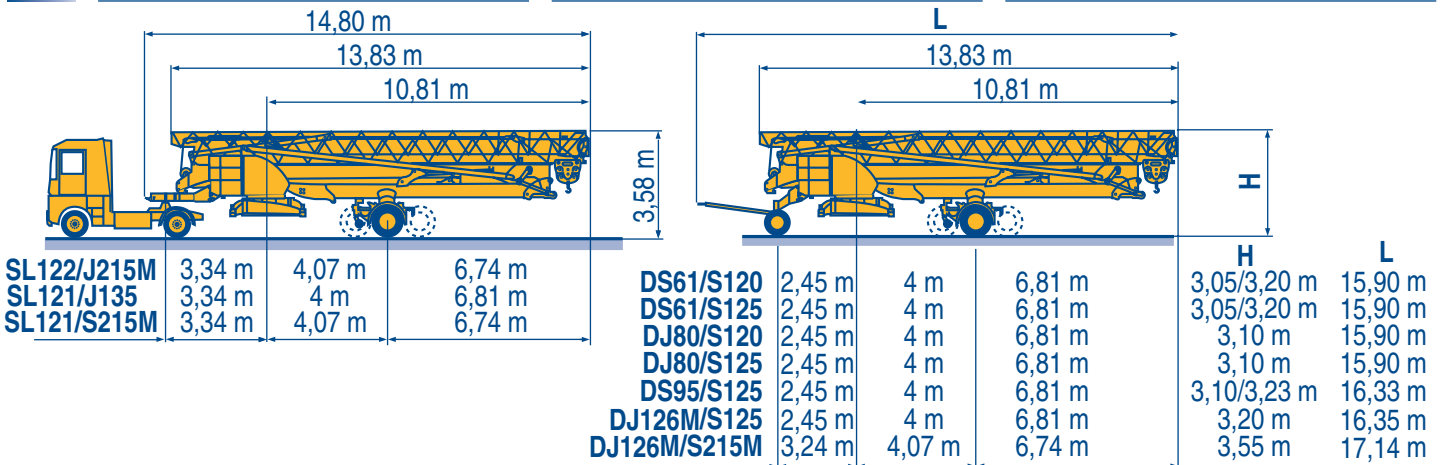
Transport
Transport



Transport
Transporte



Trasporto
Transporte



LWR 1

SL122/J215M

SL121/J135

SL121/S215M

DS95/S125

DJ126M/S125

DJ126M/S215M

DS61/S120

DS61/S125

DJ80/S120

DJ80/S125

Chantier

Baustelle

Site

Obra

Cantiere

Estaleiro



Document commercial non contractuel. Pour toute information technique se référer à la notice correspondante

Unverbindliches Vertriebsdokument. Für technische Informationen, siehe die entsprechenden Anweisungen.

This commercial document is not legally binding. For any technical information, please refer to the corresponding instructions.

Documento comercial non contractuel. Para cualquier información técnica, ver la noticia correspondiente.

Documento commerciale non vincolante, per tutte le informazioni tecniche fare riferimento al catalogo istruzioni

Documento comercial não contratual. Para qualquer informação técnica complementar consultar as respectivas instruções

Manitowoc
Crane Group

POTAIN
Manitowoc Crane Group

18, rue de Charbonnières - B.P. 173
69132 ECULLY Cedex - France

Tél. : (33) 4 72 18 20 20

Fax. : (33) 4 72 18 20 00

www.manitowoccrane.com www.potain.com

Copyright.Reproduction interdite © POTAIN 2002

Igo 28 A

Réf. 2002.51 LWR 1

Reserva de modificaciones

Modifiche riservate

Modificaciones reservadas

Subject to modification

Änderungen vorbehalten

Modifications réservées

Printed in France

Réalisation HeadLines